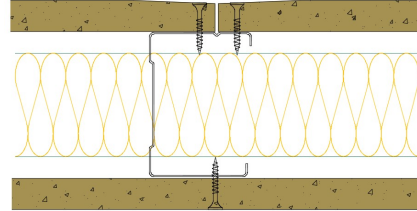


AS70-B-163(50) - SPEEDLINE System Data Sheet - Version V1 (24-10-23)

SPEEDLINE 70mm Acoustic 'C' Stud Partition
 @600mm Ctrs, with BG Gyproc 15mm DuraLine
 each side, 50mm APR



System Performance Breakdown

Fire Resistance:

BS476 Part 22:1987:

Test Ref & Date or Applied Ref & Report:

Max Height:

Thickness:

Duty Grade: BS 5234: Part 2:1992:

Sound Insulation:

60/60 Minutes (Integrity/Insulation).

BTC 17435F - BRE Report P102396-1011A

Refer to Speedline Specification Clause

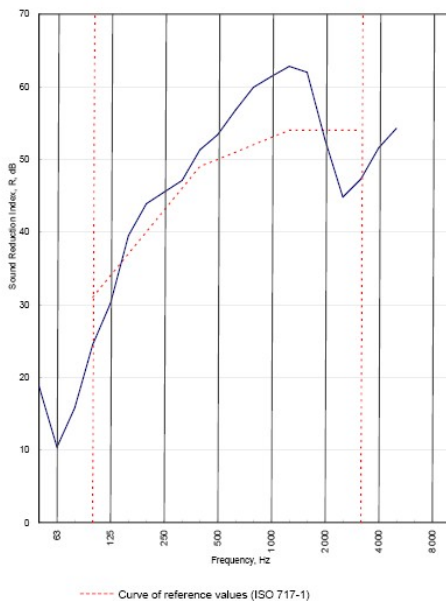
102 mm. (At Base Track, Excluding Finishes)

Severe - Annexes A-F

50 R_wdB, Date Tested or Assessed Against - 29/06/2010

Test Code:
H16909BA
Test Date:
29/06/2010

Freq. Hz	R dB
50	18.8
63	10.4
80	15.8
100	24.5
125	30.2
160	39.5
200	43.9
250	45.5
315	47.1
400	51.3
500	53.4
630	56.8
800	59.9
1 000	61.4
1 250	62.8
1 600	62.0
2 000	52.7
2 500	44.8
3 150	47.3
4 000	51.6
5 000	54.3
6 300	
8 000	
10 000	



Rating according to BS EN ISO 717-1:1997 **R_w (C;Ctr) = 50 (-2;-7) dB**
 Max dev. 9.2 dB at 2 500 Hz

C ₅₀₋₃₁₅₀ = -7 dB	C ₅₀₋₅₀₀₀ = -6 dB	C ₁₀₀₋₅₀₀₀ = -2 dB
C ₇₅₀₋₃₁₅₀ = -19 dB	C ₇₅₀₋₅₀₀₀ = -19 dB	C ₁₁₂₀₋₅₀₀₀ = -7 dB

TESTED AT ONE OF THE UKAS ACCREDITED LABORATORIES BELOW

B.T.C (H-Ref on Graph)	
B.R.E	
AIRO	
S.R.L	

Customer: Metsec plc Hepsec Division



BTC 16957A: Page 9 of 11

SPEEDLINE Drywall Systems, Adsetts House, 16 Europa View, Sheffield Business Park, Sheffield, S9 1XH.

Tel: 0114 231 8030.

Email: enquiries@speedlinedrywall.co.uk

(As per the requirements set out in ISO/IEC 17025:2017 regarding test data the results stated have been carried out by voestalpine Metsec plc as part of the contract to supply Speedline Metal Sections to SIG Plc)